

LBT *Italia*



LBT Call for Proposal 2023-24

WEBINAR

LBT Governance

Board of Directors

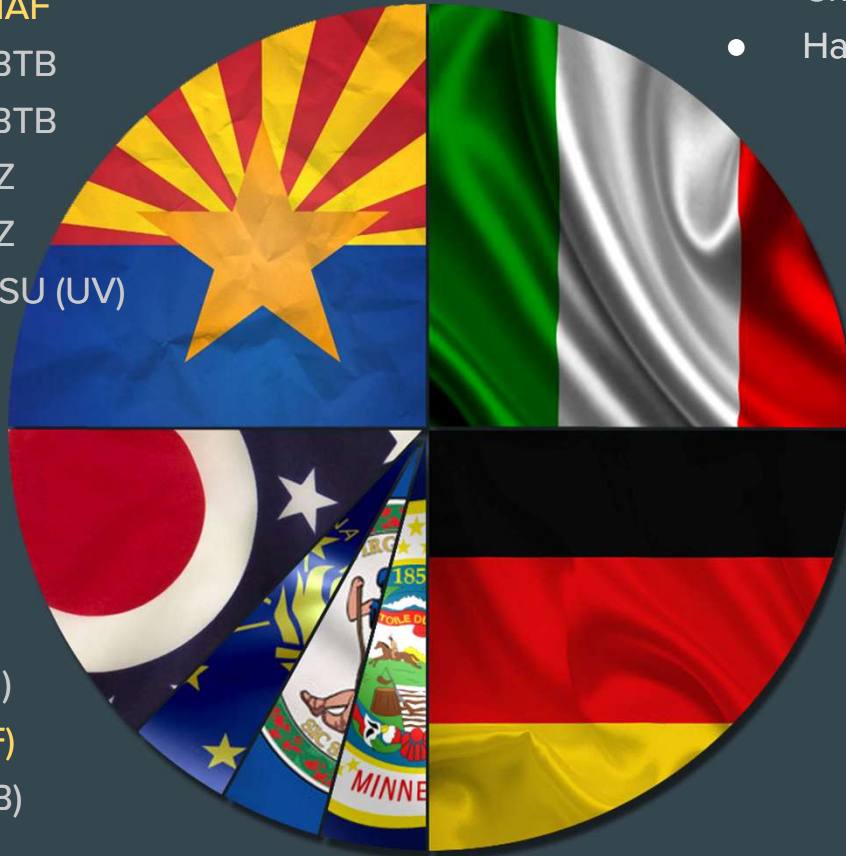
- **Adriano Fontana** INAF (Chair and President)
- Chris Kochanek OSU (Vice Chair)
- Danny Gasch, RC (Honorary Director)
- **Roberto Ragazzoni** INAF
- Matthias Steinmetz LBTB
- Andreas Quirrenbach LBTB
- Buell Jannuzi AZ
- Dennis Zaritsky AZ
- Mark Whittle OSU (UV)

Members Representative

- **Filippo Zerbi** INAF
- Buell Jannuzi AZ
- Christoph. Hadad OSU
- Hans-Walter Rix LBTB

Sci. Adv. Committee

- Rick Pogge (OSU)
- **Michele Bellazzini** (INAF)
- Eduardo Banados (LBTB)
- John Eisner (AZ)

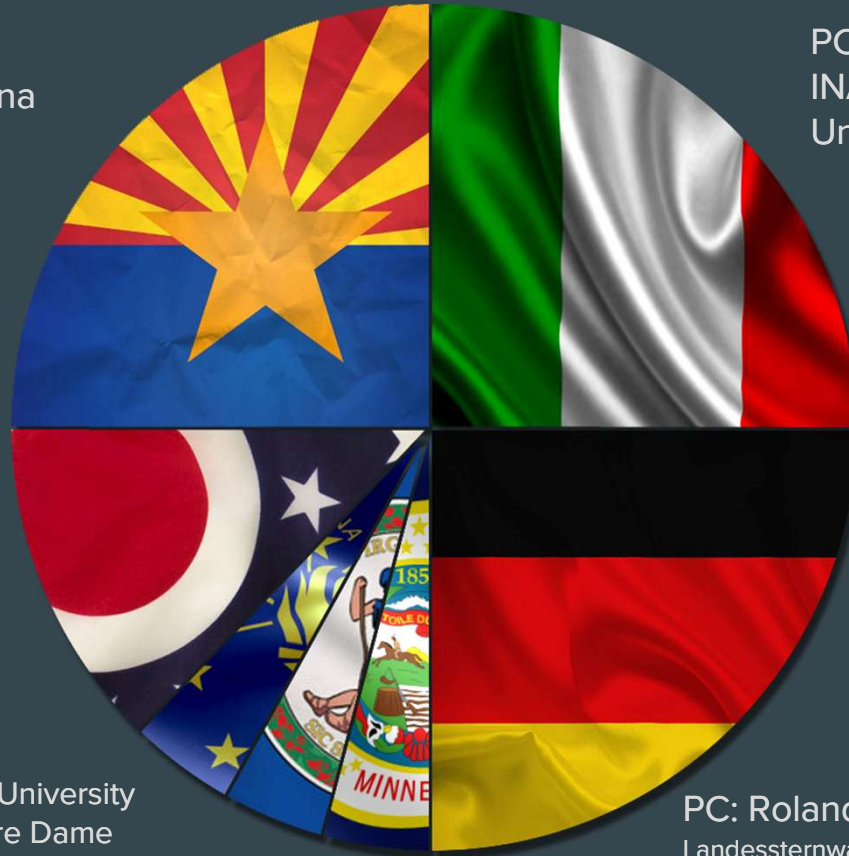


Science Operations

Partners Coordinators

PC: Eiichi Egami
University of Arizona

PC: Roberto Speziali
INAF Institutes (16) +
Universities



PC: Kris Stanek OHIO State University
PC: Peter Garnavich Univ. of Notre Dame
PC: Chick Woodward Univ. of Minnesota
PC: Mark Whittle Univ. of Virginia

PC: Roland Gredel
Landessternwarte – Heidelberg
Leibniz Institute for Astrophysics Potsdam – Potsdam
Max-Planck-Institut für Astronomie – Heidelberg
Max-Planck-Institut für Extraterrestrische Physik – Munich
Max-Planck-Institut für Radioastronomie – Bonn



LBT-ITALIA Team

<https://lbt.inaf.it/staff.html>

Roberto Speziali	OAR	Partner Coordinator
Felice Cusano	OAS	Responsible for Service Obs./ Lead Observer (2012)
Andrea Rossi	OAS	Lead Observer (2015)
Simona Paiano	OAR	Observer (2020)
Ester Marini	OAR	Observer (Sept. 2021)
Roberta Carini	OAR	Observer (sideline)
Marco Faccini	OAR	Observer (sideline)
Diego Paris	OAR	Responsible for Imaging data Reduction and ICT
Adriana Gargiulo	IASF-MI	Resp. Spect. data reduction (2017)
Susanna Bisogni	IASF-MI	Spect. data reduction (2020)
Marco Fumana	IASF-MI	Spec. pipeline development
Vincenzo Testa	OAR	Responsible for the Italian TAC/Proposal Selection

Former Team Members

Konstantina Boutsia → Instrumentation Scientist @ Magellan
Eleonora Sani (2012 - 2015) → Support Astronomer @ ESO VLT
Alida Marchetti - IASF MI
Bianca Garilli, Letizia Cassarà – IASF MI (spectroscopic reduction)
Stefano Gallozzi - OAR (LSC) – Alessio Giunta (ASI - Observer)

LBT ITALIA WBS

Management

Annual Call
Writing call/form, PIT,
web site

**Proposal
Evaluation**
Ext. Referee form,
assignment, TAC

**Proposal
Feasibility**
TAC Feedback

**DDT/Too &
Delta Calls**

Meetings
Internal, I2A, TAC, UC
LBTO, PI Instrument

Performance
Statistics, PI check

Observations

Scheduling

Preparation
PI Support, OB review

**On site/remote
Observations**
Observation, calibration,
log writing, data checking

PI feedback

Spectroscopic Data Reduction

**Data Red.
Pipeline**
Writing/update

**MODS/LUCI
LS & MOS
data reduction
help desk**

PI feedback

Imaging Data Reduction

**Data Red.
Pipeline**
Writing/update

**LBC/LUCI
data reduction**

PI feedback

ICT

**LSC (DB)
Maintenance**

WEB Site

**Social
Platforms**

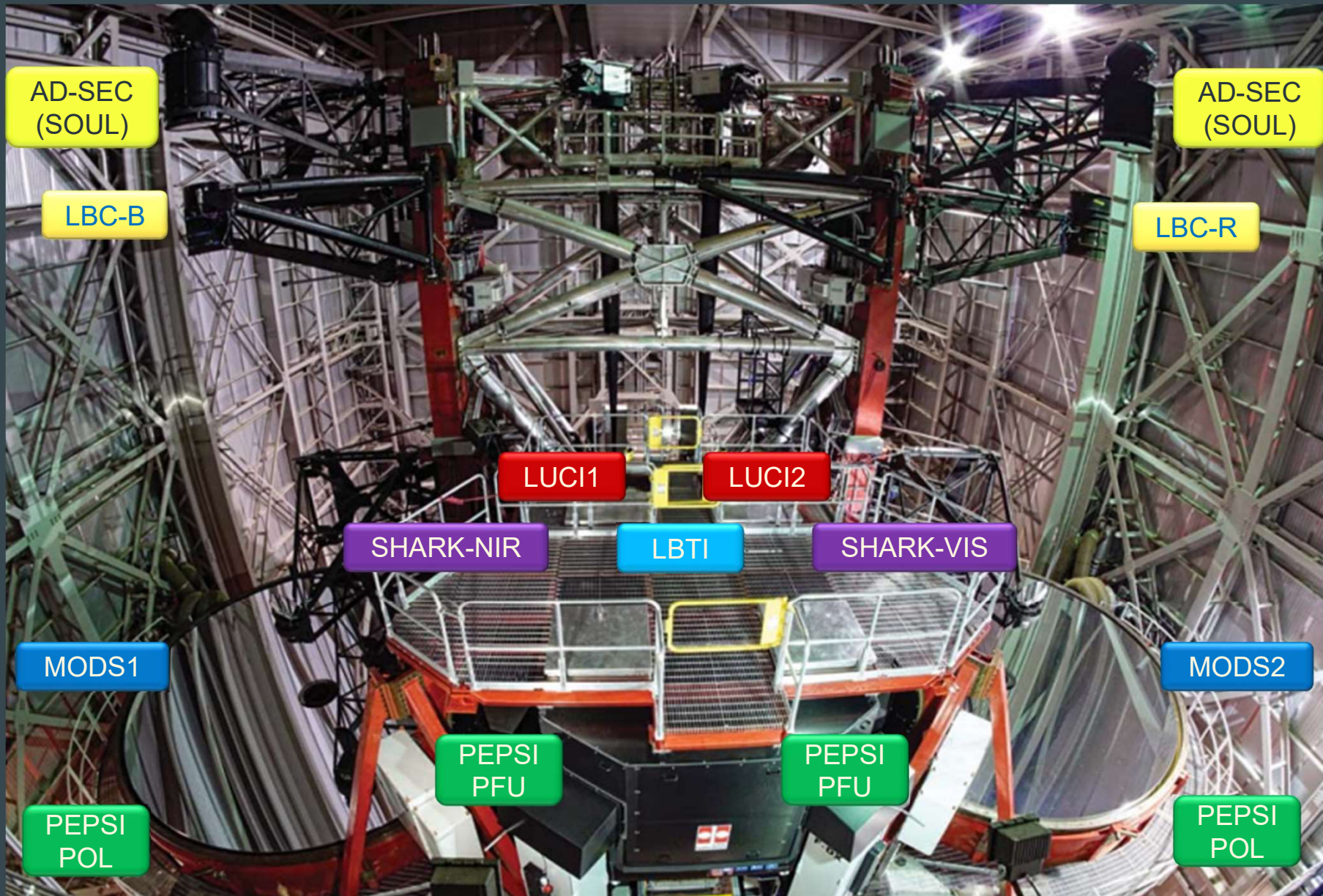
**Team
Support**

<https://lbt.inaf.it/instruments.html>

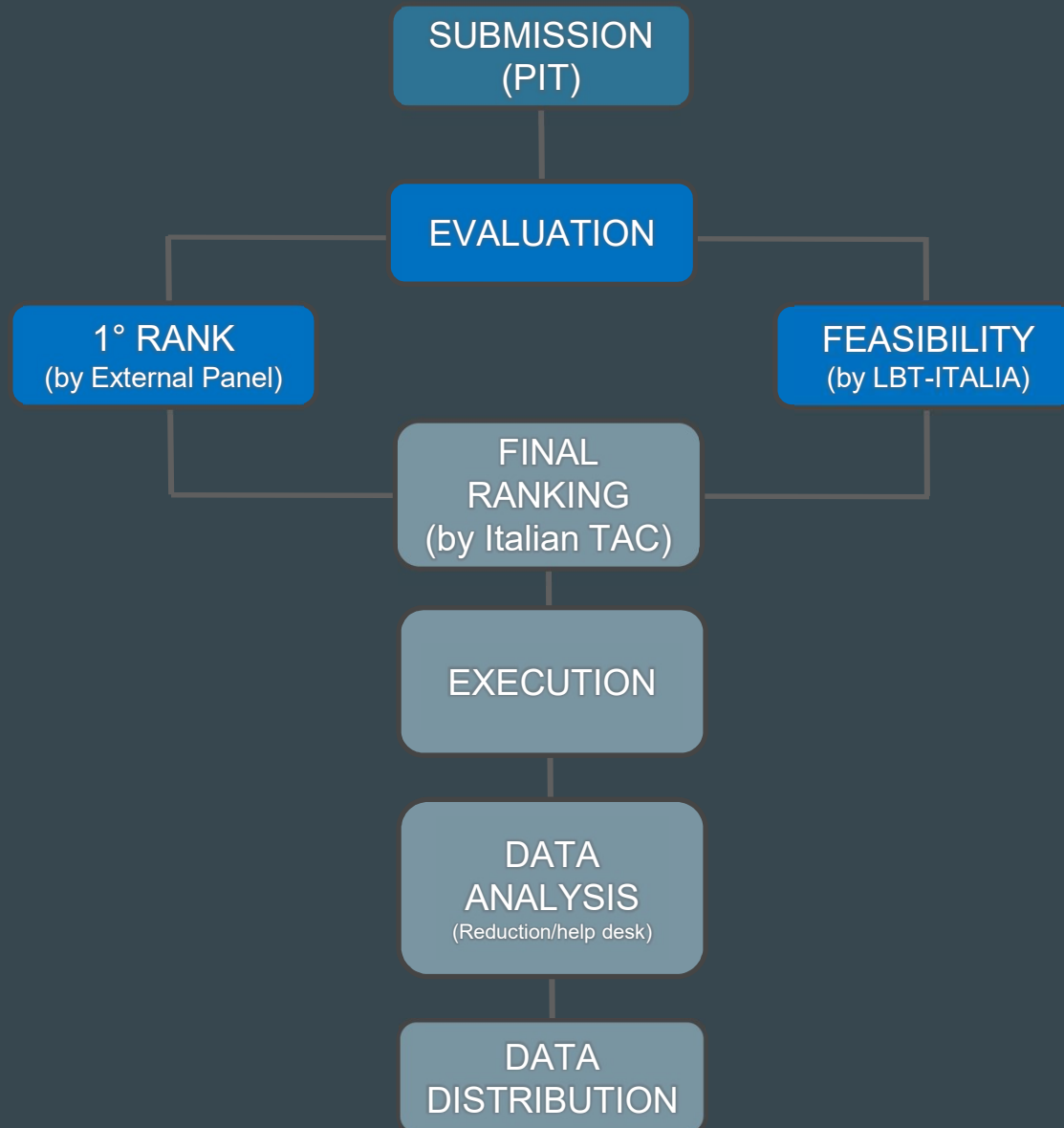
LBT Instruments Overview

	Instrument	Type	Wavelength	AO
VIS	LBC-B (Left)	Wide Field Imager	350 – 650 nm	
	LBC-R (Right)	Wide Field Imager	550 – 1000 nm	
	MODS 1 (Left)	Imager / Spectrograph	320 – 1100 nm	
	MODS 2 (Right)	Imager / Spectrograph	320 – 1100 nm	
	PEPSI	Spectrograph / Polarimeter	383 – 907 nm	
NIR/MIR	LUCI1 (Left)	Imager / Spectrograph	890 – 2440 nm	X
	LUCI2 (Right)	Imager / Spectrograph	960 – 2440 nm	X
	LMIRCAM	Imager / Coronagraph	3-5 μm	X
	NOMIC	Imager	8-13 μm	X

LBT



PROPOSAL WORKFLOW



CALL

<https://lbt.inaf.it/callforproposals.html>

PIT INTERFACE

Untitled[*] - LBTO PIT 2022B.2022B.2.0

File Edit View Catalog Help

Overview

Title: Cannoli detection on the moon

TAC Category: C: ISM, star formation, and planetary systems

Keywords: 0 Selected

Attachment: PDF attachment goes here.

Name	Institution	Phone	Email
Principal Investigat...			

Overview | Time Requests | Scheduling | Submit

Observations

Group by: Resources Conditions Targets

Item	Run	Time	Vis
LBC B-BESSEL			
<ul style="list-style-type: none"> CC Any, AS Any (> 1.2"), FWHM Any (> 0.6"), SR Any (< 0.2...) Moon Exposure Time 	B	1.00 HR	●
MODS Dual Grating Longslit 1.00 arcsec			
<ul style="list-style-type: none"> CC Any, AS Any (> 1.2"), FWHM Any (> 0.6"), SR Any (< 0.2...) Moon Exposure Time 	C	1.00 HR	●

Sum observation times: 2.00 hr

«enter a target here»

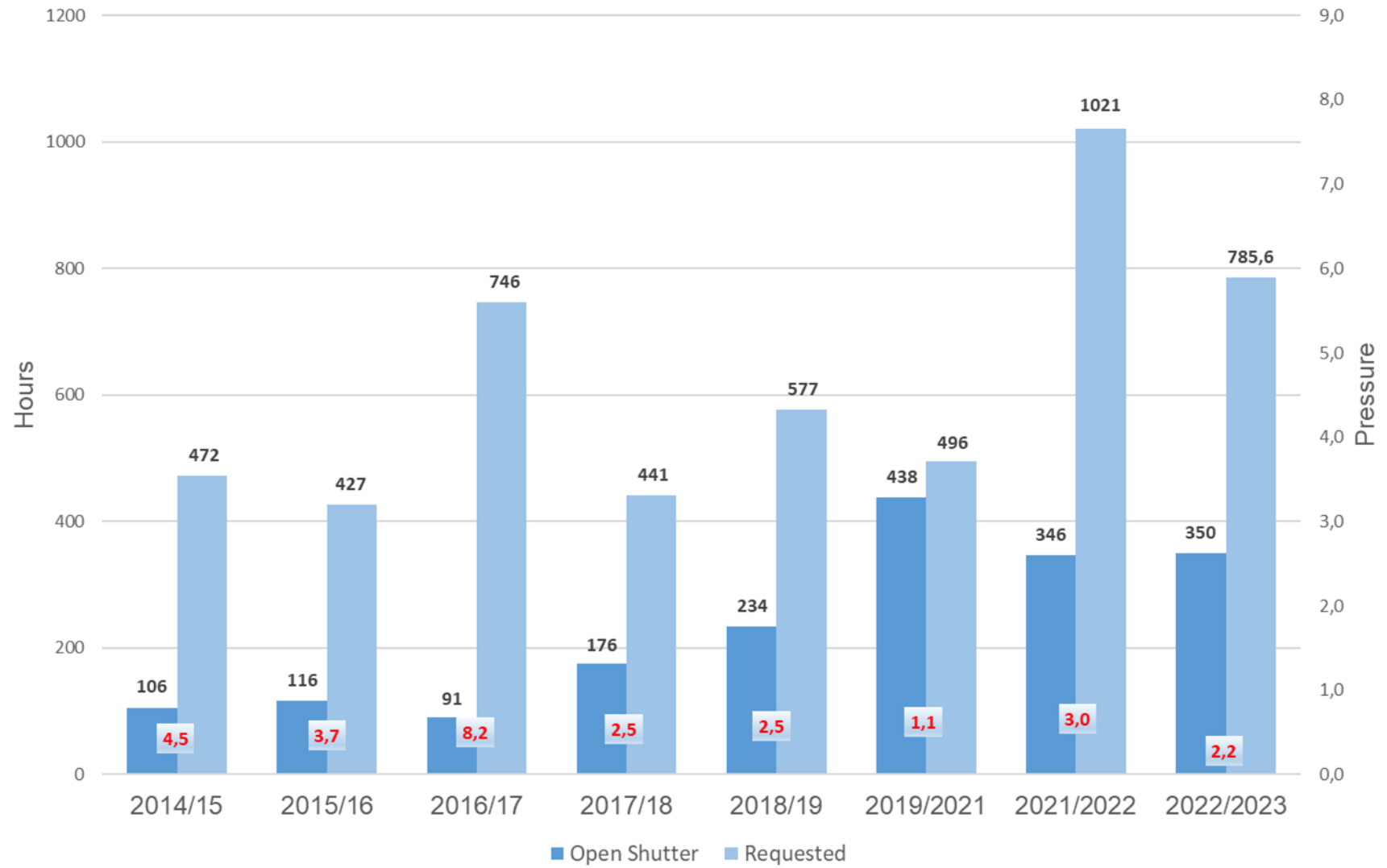
Observations | Targets

Problems

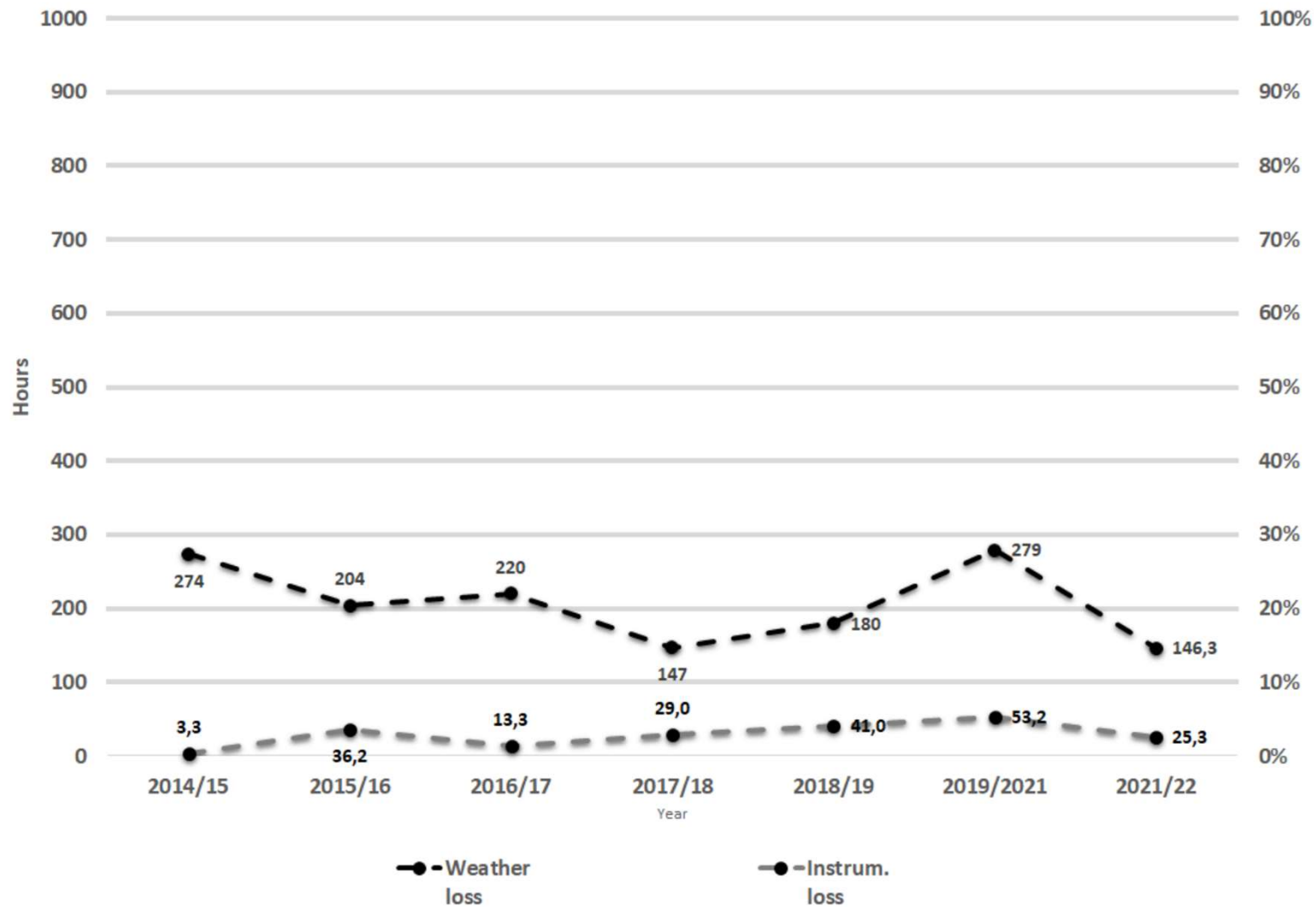
Description	Section
<input checked="" type="checkbox"/> Catalog lookup returned no results for target "3"	Targets
<input type="checkbox"/> Please provide a PDF attachment.	Overview
<input type="checkbox"/> Please provide full contact information for Principal Investigator.	Overview
<input type="checkbox"/> Please provide keywords.	Overview
<input type="checkbox"/> Please specify a time request.	Time Requests

Ready

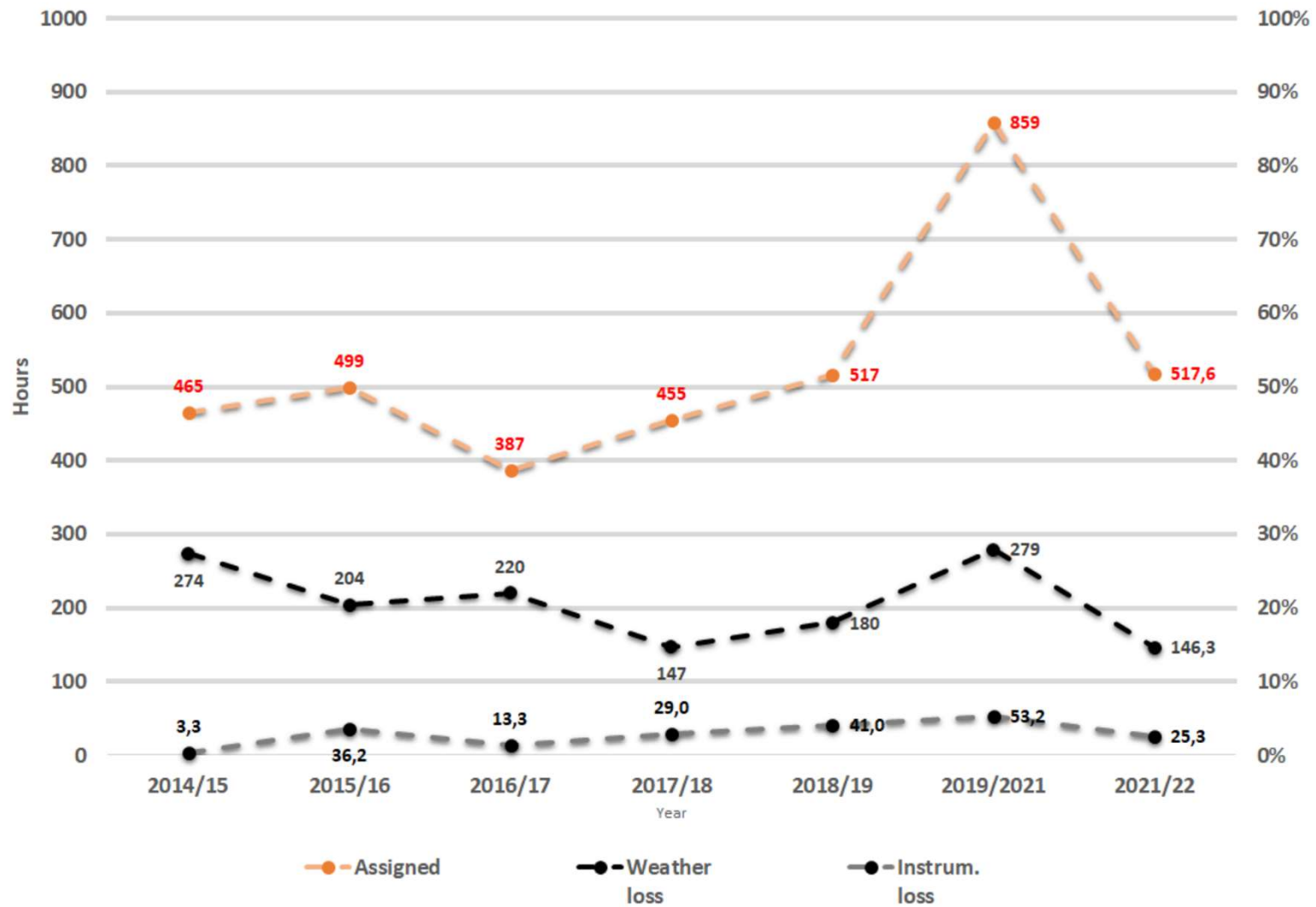
Telescope Pressure (INAF)



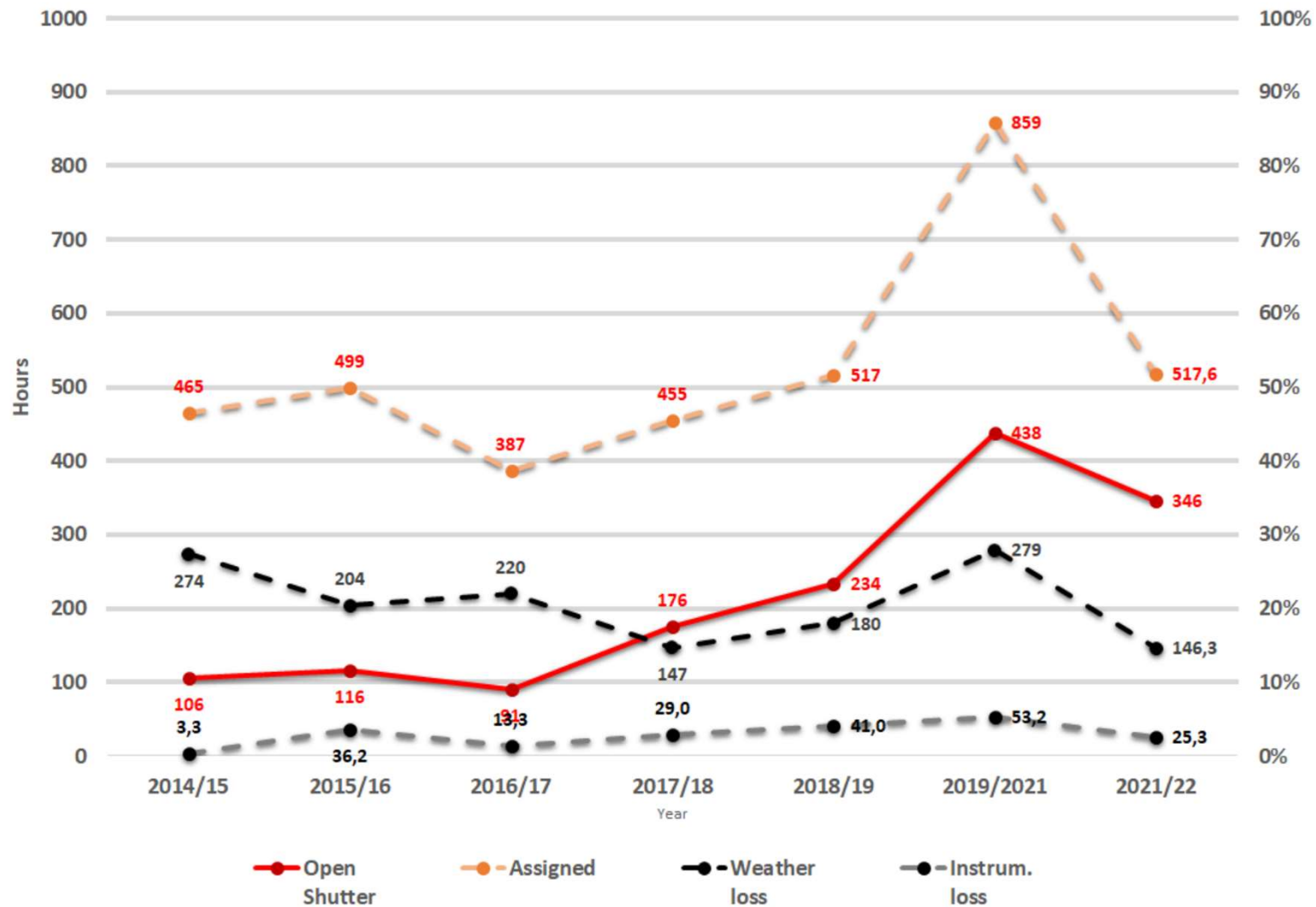
LBT ITALIA STATISTICS



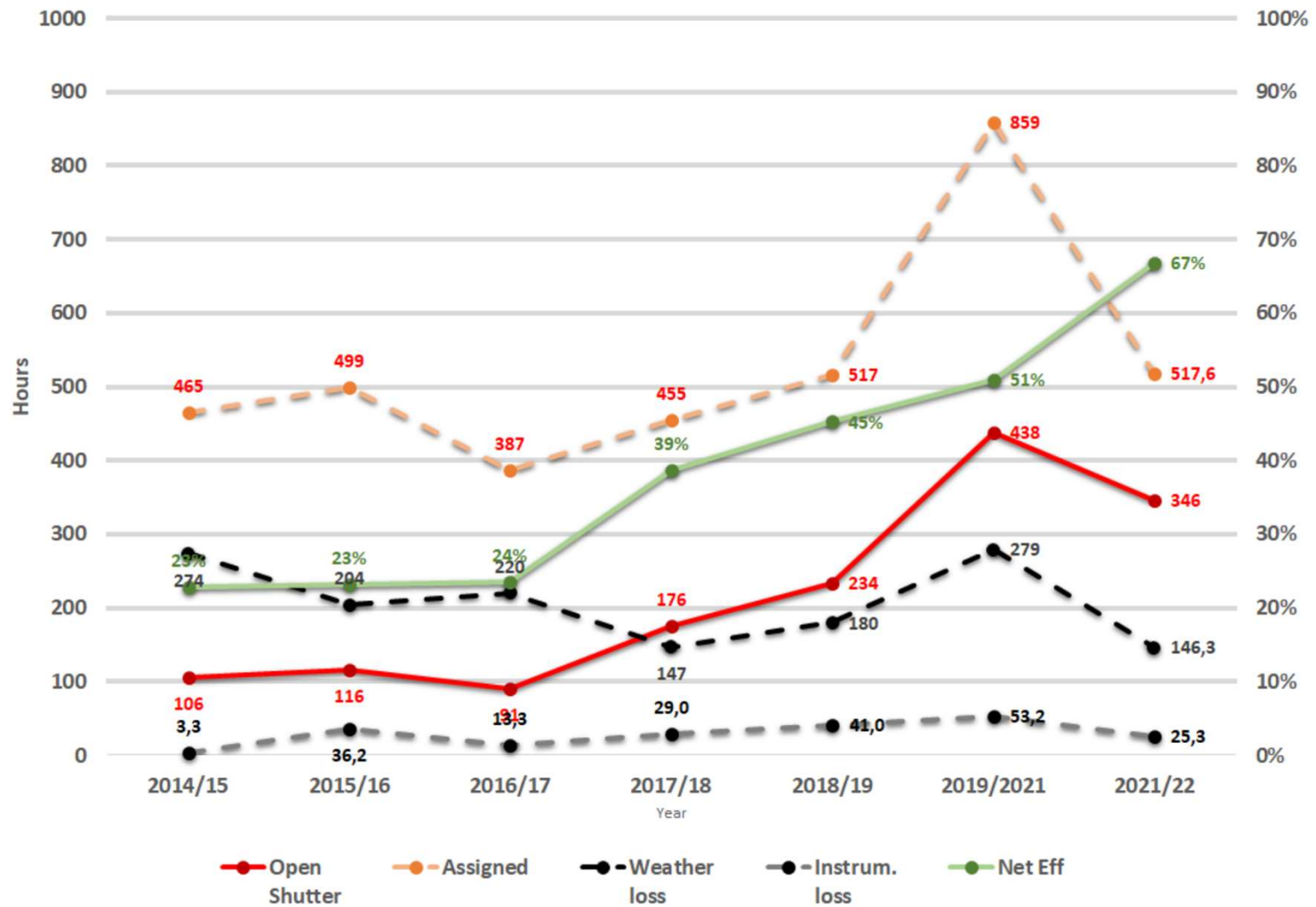
LBT ITALIA STATISTICS



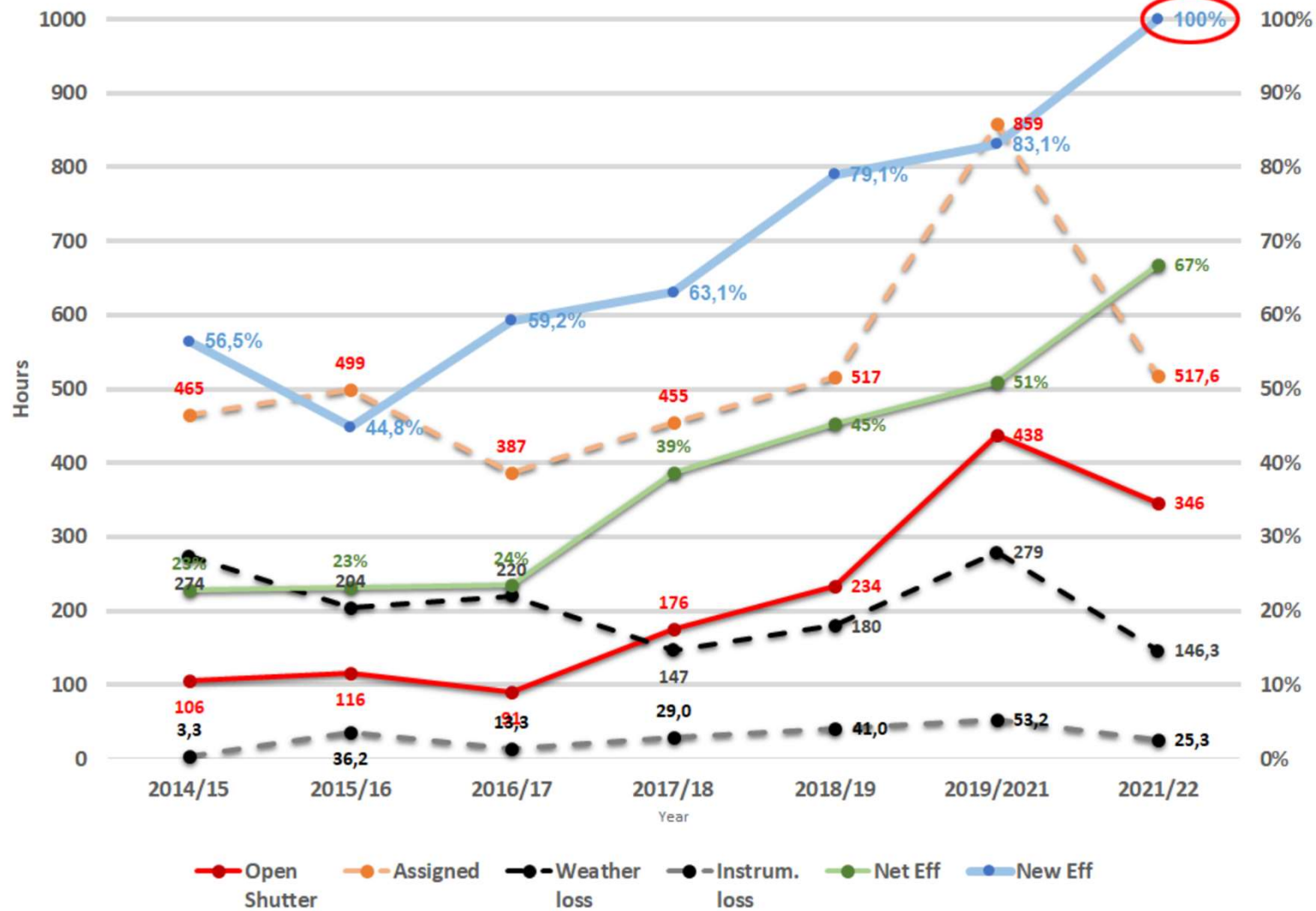
LBT ITALIA STATISTICS



LBT ITALIA STATISTICS

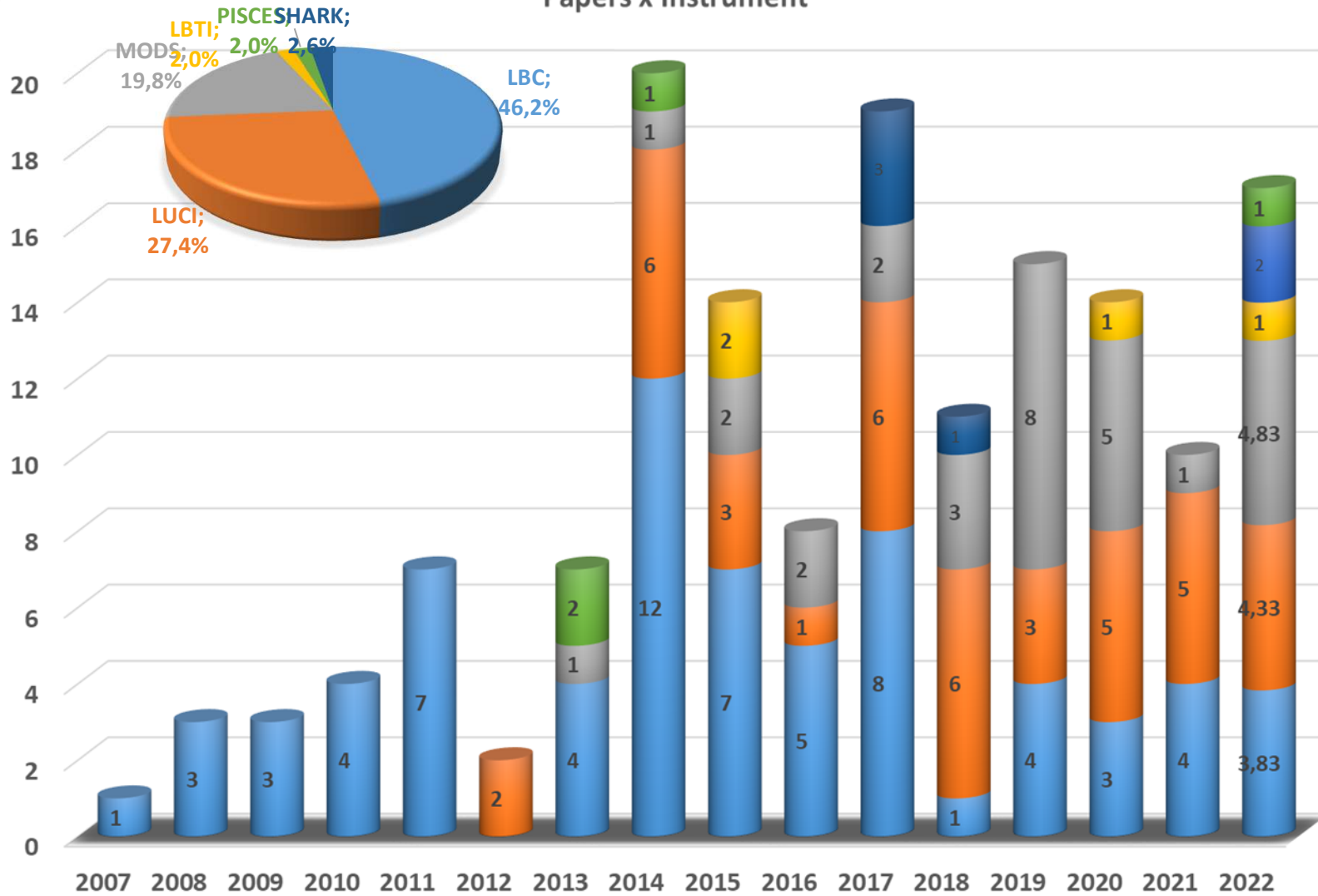


LBT ITALIA STATISTICS



157 papers

Papers x Instrument



■ LBC ■ LUCI ■ MODS ■ LBTI ■ PEPSI ■ PISCES ■ SHARK

■ ГВС ■ ГЛСІ ■ МОДС ■ ГВТІ ■ ПЕПСІ ■ ПІСЕС ■ ШАРК



M31 gri sloan (4hr)



NGC4605 gr sloan (2hr)

lbt.inaf.it
lbt-italia@inaf.it